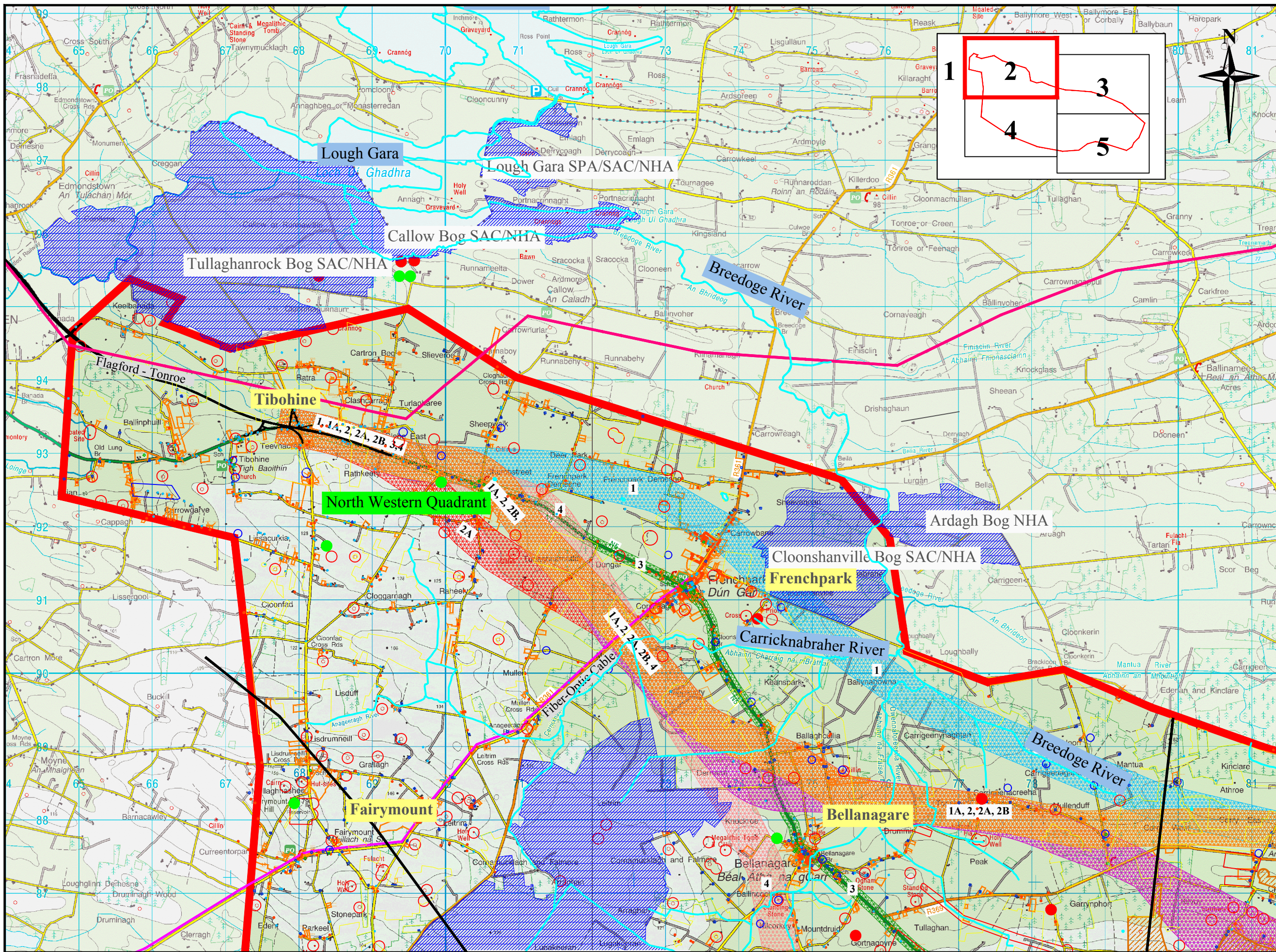


- Notes
- Legend**
- Constraints - Constraints Report**
- Study Area Outline
  - Designated Areas NHA, SAC, SPA
  - Potential Ecology Sites
  - Planning Applications
  - Telecom Fiber Optic
  - ESB 38KV-220KV
  - Sites and Monuments
  - Rathcroghan & Cairns
  - Key Archaeological Constraints
  - Waste Water Treatment Plant
  - Schools
  - Church
  - Graveyard
  - Community Hall
  - Sports Ground
  - Tourism Related Structures
  - Communications Mast
  - Corridor 1
  - Corridor 1A
  - Corridor 2
  - Corridor 2A
  - Corridor 2B
  - Corridor 3
  - Corridor 4
  - Unknown Building to be confirmed
  - Business and Residential Building
  - Residential Building
  - Commercial Building
  - Lakes and Rivers
  - Watershed Boundary
- Constraints - Route Selection Report**
- Archaeological Constraint Recorded Monument
  - Archaeological Constraint River
  - Architectural Constraint
  - Boundary of Westland Holding at Strokestown
  - Archaeological Constraint Area of Potential
  - Water Sources
  - Water Storage



Rev	Description	Checked	Approved	Date
1	Post Peer Review			28/3/08

Project No. & Desc. RN04250 N5 Strategic Corridor - Route Corridor Selection		Layout 1 of 5	
Drawing Title All constraints		Date September 2007	
File Folder P:\Proj\2014\1415\1415-1-3-REC\CDOS\1-11 - RSR Drawings\010 December 2017\RN04250-12-348 All Constraints.dwg	Drawing No.: RN04250-12-348	Scale V NA	Scale H 1:100,000
Drawn CG			



Notes

**Legend**

**Constraints - Constraints Report**

- Study Area Outline
- Designated Areas
- NHA, SAC, SPA
- Potential Ecology Sites
- Planning Applications
- Telecom Fiber Optic
- ESB 38KV-220KV
- Sites and Monuments
- Rathcroghan & Cairns
- Key Archaeological Constraints
- Waste Watwe Treatment Plant
- Schools
- Church
- Graveyard
- Community Hall
- Sports Ground
- Tourism Related Structures
- Communications Mast
- Corridor 1
- Corridor 1A
- Corridor 2
- Corridor 2A
- Corridor 2B
- Corridor 3
- Corridor 4
- Unknown Building to be confirmed
- Business and Residential Building
- Residential Building
- Commercial Building
- Lakes and Rivers
- Watershed Boundary

**Constraints - Route Selection Report**

- Archaeological Constraint Recorded Monument
- Archaeological Constraint River
- Architectural Constraint
- Boundary of Westland Holding at Strokestown
- Archaeological Constraint Area of Potential
- Water Sources
- Water Storage



ROSCOMMON COUNTY COUNCIL

Courthouse,  
Roscommon,  
Phone: 090-6637100

Majella Hunt  
Director of Services

NATIONAL ROADS DESIGN OFFICE ROSCOMMON

Racecourse Rd.  
Roscommon,  
Phone: 090 6627004

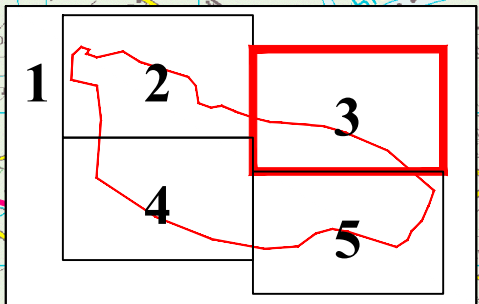
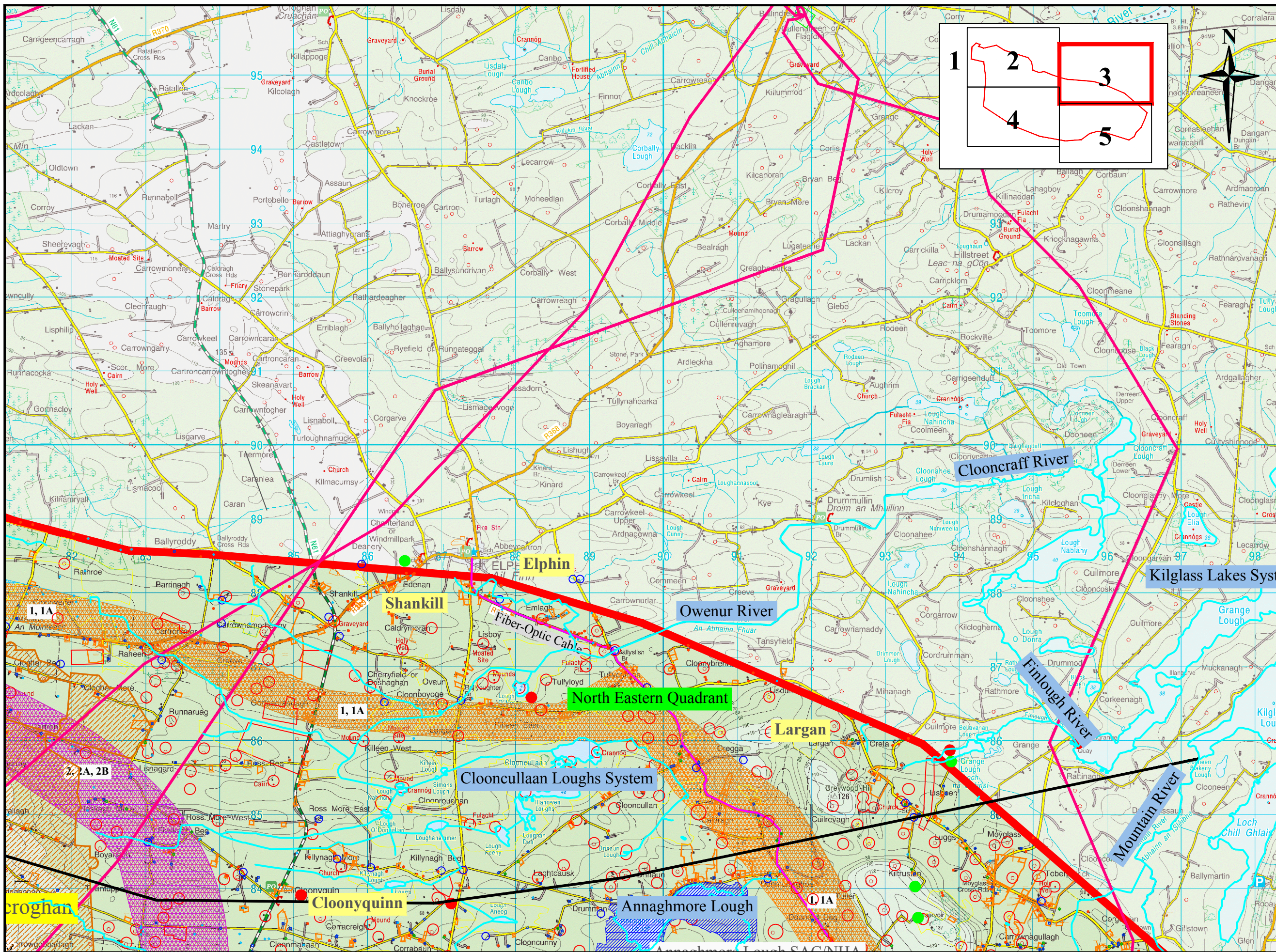
Martin Curley, B.E., C.Eng.,  
Senior Engineer.

Rev	Description	Checked	Approved	Date
1	Post Peer Review			28/02/08

Project No. & Desc.  
RN04250 N5 Strategic Corridor - Route Corridor Selection

Drawing Title  
All constraints

File Folder P:\Prog\2014\1415\1415-1-3-REG\CDOS\311 - RSR Drawing\RD0 December 2017\RN04250-12-348 All Constraints.dwg	Drawing No.: RN04250-12-348	Layout 2 of 5
Drawn CG	Scale V NA	Date September 2007
	Scale H 1:20,000	

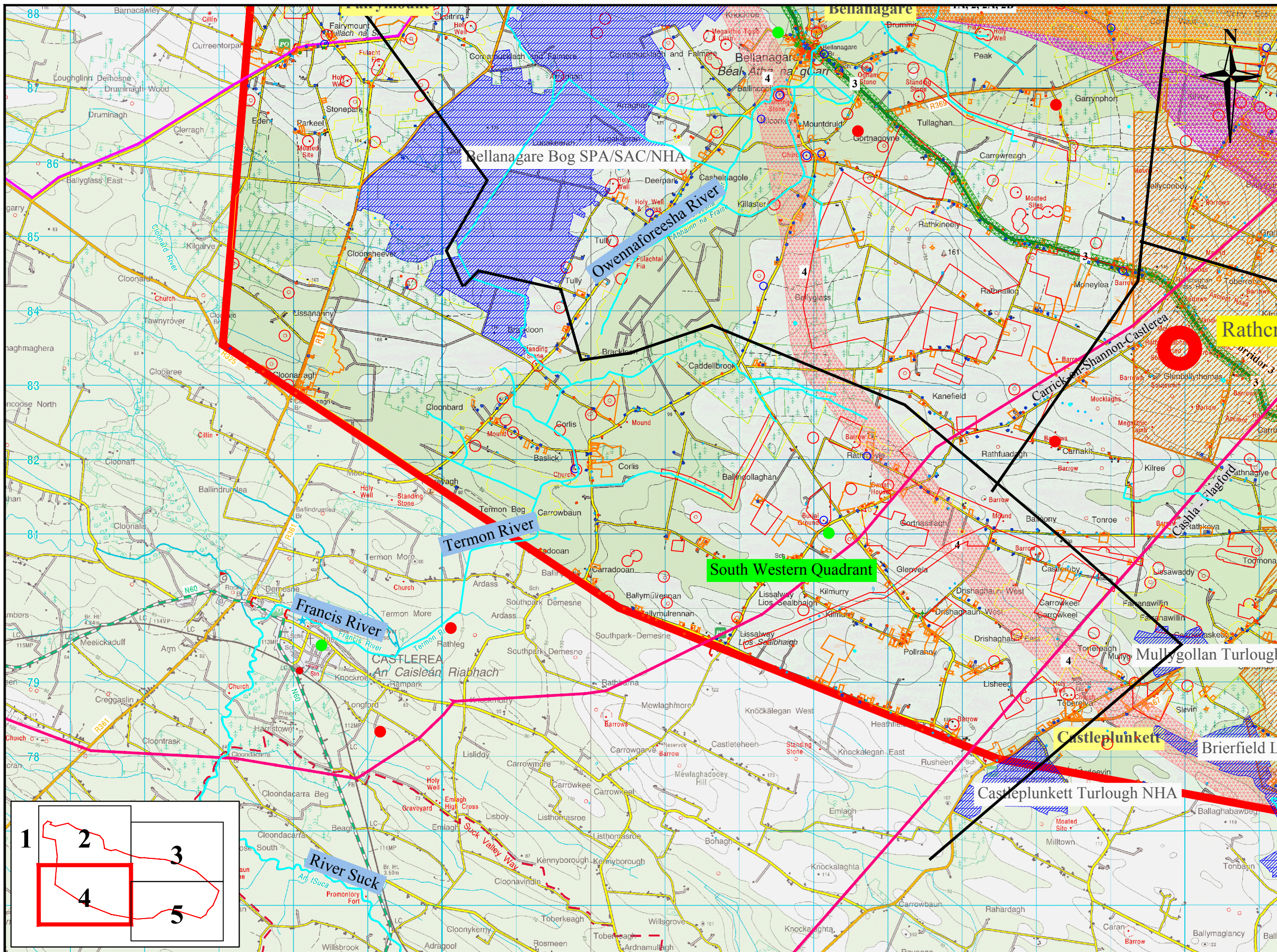


- Notes
- Legend**
- Constraints - Constraints Report**
- Study Area Outline
  - Designated Areas
  - NHA, SAC, SPA
  - Potential Ecology Sites
  - Planning Applications
  - Telecom Fiber Optic
  - ESB 38KV-220KV
  - Sites and Monuments
  - Rathcroghan & Cairns
  - Key Archaeological Constraints
  - Waste Water Treatment Plant
  - Schools
  - Church
  - Graveyard
  - Community Hall
  - Sports Ground
  - Tourism Related Structures
  - Communications Mast
  - Corridor 1
  - Corridor 1A
  - Corridor 2
  - Corridor 2A
  - Corridor 3
  - Corridor 4
  - Unknown Building to be confirmed
  - Business and Residential Building
  - Residential Building
  - Commercial Building
  - Lakes and Rivers
  - Watershed Boundary
- Constraints - Route Selection Report**
- Archaeological Constraint Recorded Monument
  - Archaeological Constraint River
  - Architectural Constraint
  - Boundary of Westland Holding at Strokestown
  - Archaeological Constraint Area of Potential
  - Water Sources
  - Water Storage

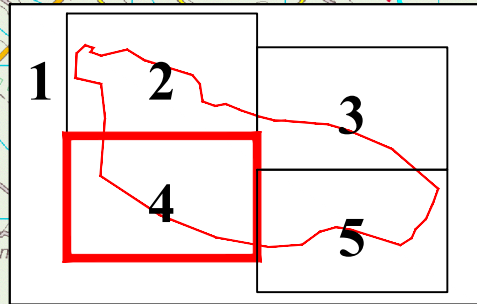


Rev	Description	Checked	Approved	Date
1	Post Peer Review			28/02/08

Project No. & Desc. RN04250 N5 Strategic Corridor - Route Corridor Selection	
Drawing Title All constraints	
File Folder P:\Proj\2014\1415\1415-13-REG\CD\CS\11 - RSR Drawing\RD0	Drawing No.: RN04250-12-348
Drawn CG	Scale V NA Scale H 1:20,000
Layout 3 of 5	Date September 2007

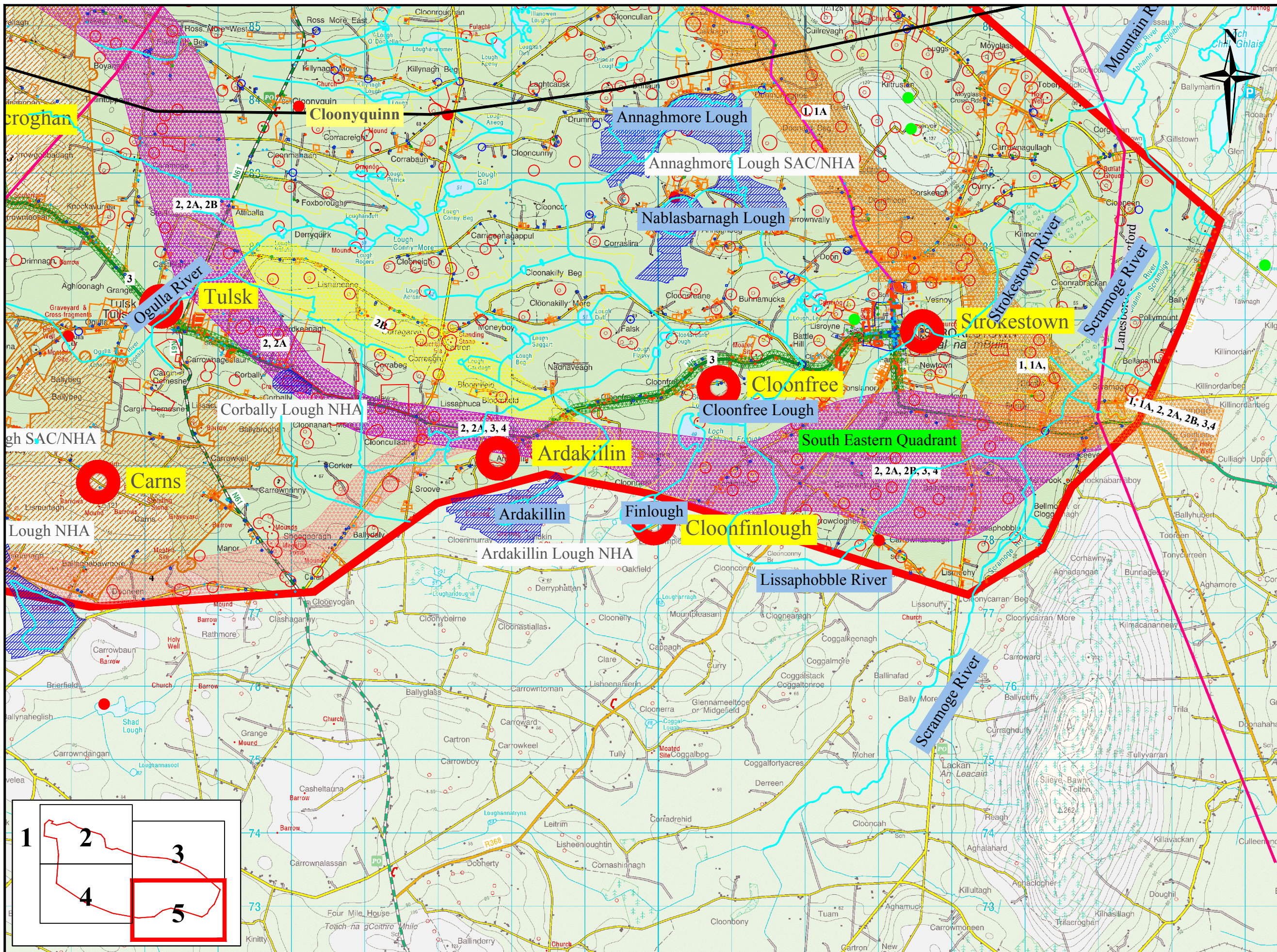


- Notes
- Legend**
- Constraints - Constraints Report**
- Study Area Outline
  - Designated Areas
  - NHA, SAC, SPA
  - Potential Ecology Sites
  - Planning Applications
  - Telecom Fiber Optic
  - ESB 38KV-220KV
  - Sites and Monuments
  - Rathcroghan & Cairns
  - Key Archaeological Constraints
  - Waste Water Treatment Plant
  - Schools
  - Church
  - Graveyard
  - Community Hall
  - Sports Ground
  - Tourism Related Structures
  - Communications Mast
  - Corridor 1
  - Corridor 1A
  - Corridor 2
  - Corridor 2A
  - Corridor 2B
  - Corridor 3
  - Corridor 4
  - Unknown Building to be confirmed
  - Business and Residential Building
  - Residential Building
  - Commercial Building
  - Lakes and Rivers
  - Watershed Boundary
- Constraints - Route Selection Report**
- Archaeological Constraint Recorded Monument
  - Archaeological Constraint River
  - Architectural Constraint
  - Boundary of Westland Holding at Strokestown
  - Archaeological Constraint Area of Potential
  - Water Sources
  - Water Storage



Rev	Description	Checked	Approved	Date
1	Past Peer Review			28/02/08

Project No. & Desc. RN04250 N5 Strategic Corridor - Route Corridor Selection		Drawing Title All constraints	
File Folder P:\Proj2004\115\115115-1348\0003\11 - RSR Drawing\000	Drawing No. RN04250-12-348	Layout 4 of 5	Date September 2007
Drawn CG	Scale V NA	Scale H 1:20,000	



Notes

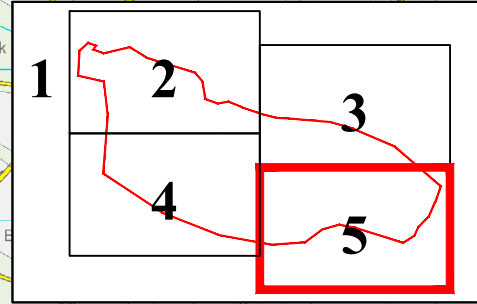
**Legend**

**Constraints - Constraints Report**

- Study Area Outline
- Designated Areas
- NHA, SAC, SPA
- Potential Ecology Sites
- Planning Applications
- Telecom Fiber Optic
- ESB 38KV-220KV
- Sites and Monuments
- Rathcroghan & Cairns
- Key Archaeological Constraints
- Waste Water Treatment Plant
- Schools
- Church
- Graveyard
- Community Hall
- Sports Ground
- Tourism Related Structures
- Communications Mast
- Corridor 1
- Corridor 1A
- Corridor 2
- Corridor 2A
- Corridor 2B
- Corridor 3
- Corridor 4
- Unknown Building to be confirmed
- Business and Residential Building
- Residential Building
- Commercial Building
- Lakes and Rivers
- Watershed Boundary

**Constraints - Route Selection Report**

- Archaeological Constraint Recorded Monument
- Archaeological Constraint River
- Architectural Constraint
- Boundary of Westland Holding at Strokestown
- Archaeological Constraint Area of Potential
- Water Sources
- Water Storage



Rev	Description	Checked	Approved	Date
1	Post Peer Review			28/02/08

Project No. & Desc.		RN04250 N5 Strategic Corridor - Route Corridor Selection	
Drawing Title			
All constraints			
File Folder	Drawing No.:	Layout	5 of 5
P:\Proj\2004\1105\1105-1348\RDOS\11 - RSR Drawing\000	RN04250-12-348		
Drawn	Scale V	Scale H	Date
CG	NA	1:20,000	September 2007